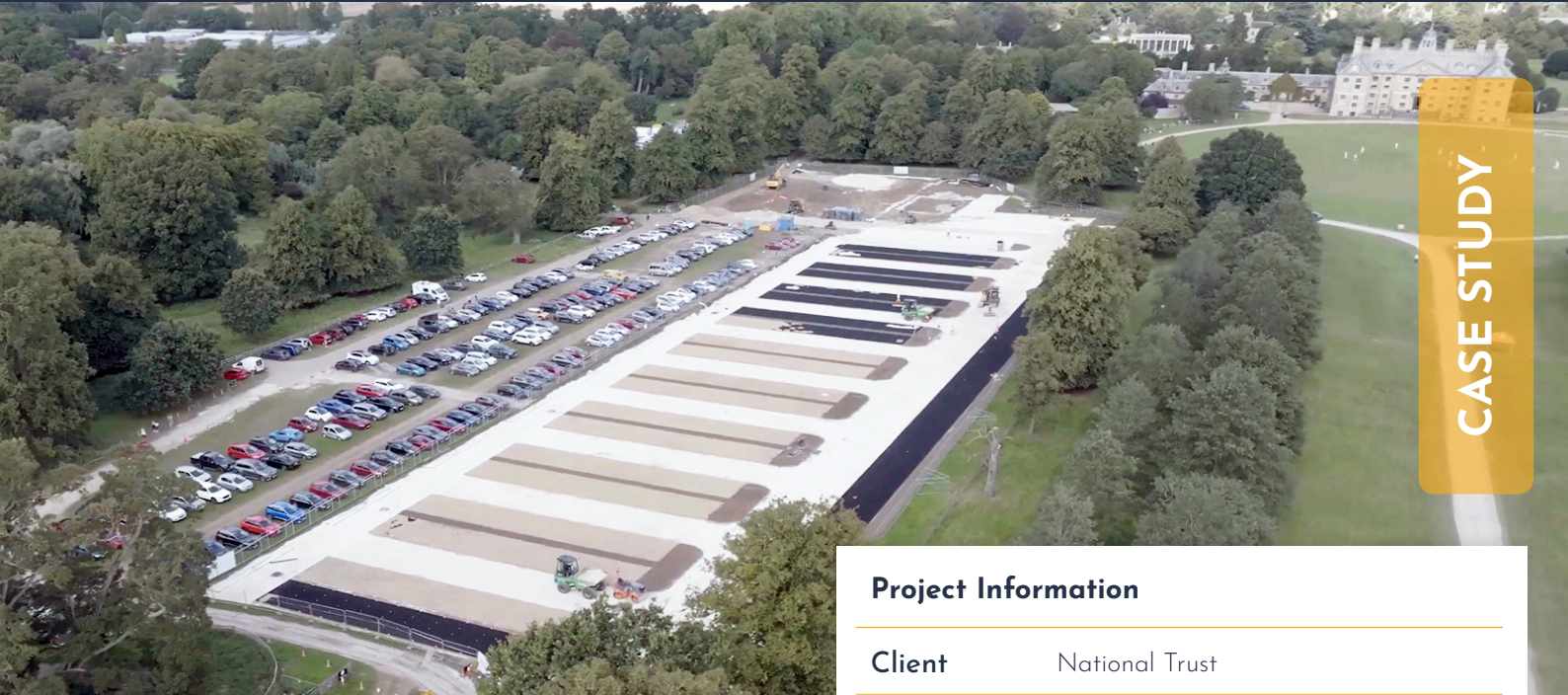


# SuDS Permeable Paving

Porous Paving Carpark, Sudspave 40, Belton House, UK



CASE STUDY



## Project Description

Belton House is a Grade I listed National Trust visitor attraction in the parish of Belton near Grantham in Lincolnshire, built between 1685 and 1687 by Sir John Brownlow, 3rd Baronet. It is surrounded by formal gardens and a series of avenues leading to follies within a larger wooded park.

## The Challenge

Existing parking arrangements consisted of a grass field with a pinned down plastic surface mesh, which was prone to rutting and waterlogging. This was unsuitable for use all year round and became a safety issue during wet weather. Planning permission was granted to develop a new and more permanent SuDS compliant parking surface within the parkland.

## The Solution

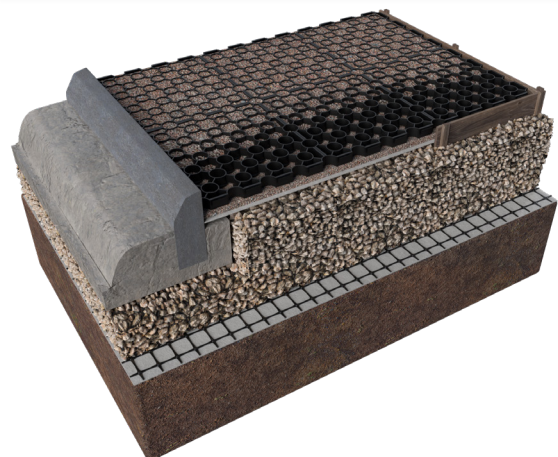
ABG's **Sudspave 40** permeable paving was installed to provide 600+ gravel-filled parking spaces over two phases of construction, suitable for use in all-weather conditions and to prevent surface water flooding. The stabilised cellular porous paving design incorporates **Abgrid** geogrid reinforcement and **Terrex** filtration/separation geotextile layers within the sub-base (as shown in the illustration). White bay markers are inserted into the Sudspave surface to delineate the parking spaces.

## Project Information

<b>Client</b>	National Trust
<b>Contractor</b>	Thomas Bow
<b>Consultant</b>	Kingfisher Design & BHB Architects
<b>Products</b>	Sudspave, Abgrid & Terrex
<b>Quantity</b>	9,200 m <sup>2</sup>

## Benefits

- Permeable, durable stabilised daily-use car park
- SuDS porous paving system for the attenuation of surface water
- Sudspave is made from recycled plastic and is 100% recyclable
- Rapid installation and secure connectivity of paving units



ABG LTD

E7 Meltham Mills Road, Meltham, Holmfirth, HD9 4DS • +44 (0)1484 852096 • [www.abgltd.com](http://www.abgltd.com)

a Bontexgeo Group company