

Project Description

The first phase of the Sheffield Hallam University green campus plan is nearing completion and includes three new buildings around a public university green. The new buildings are situated on the site of the recently demolished Science Park, adjacent to Howard Street and leading up from Sheffield railway station. The new campus park realm provides a green heart for the campus, with new trees planted and more than 400 sqm of greenery and spaces for up to 150 people to sit and enjoy.

The Challenge

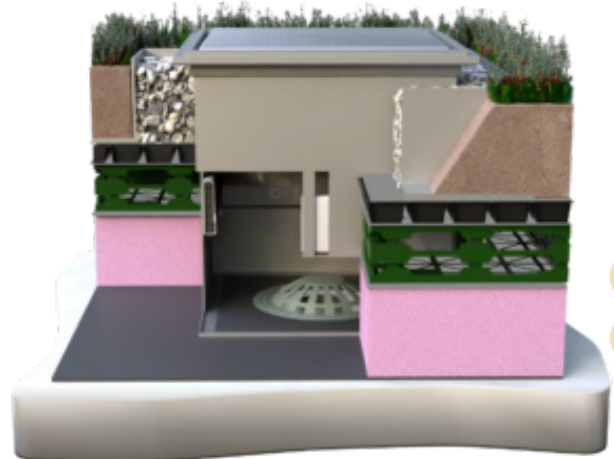
As part of the SuDS approval process for the campus redevelopment, a surface water management plan was required to minimise the risk of localised and downstream flooding. Discharge consent from the local water authority required surface water run-off volumes to be no greater than the levels from that of the pre-developed land.

The Solution

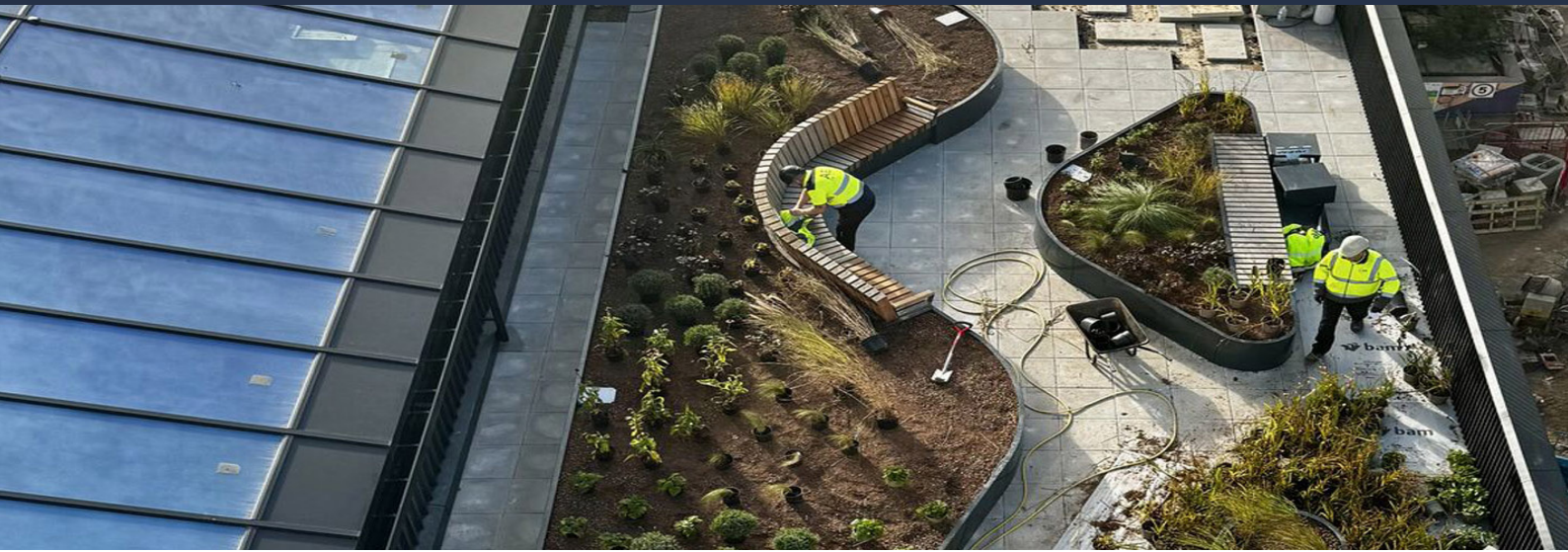
The ABG bluroof system was specified to provide storm water attenuation atop of the three new buildings (for the Sheffield Business School, Sheffield Institute of Law and Justice and Sheffield Institute of Social Sciences). The outflow of rainfall from the rainwater outlets during a calculated storm event is restricted by the blue roof system, so that instead of large volumes of water deluging into the drainage network during a short period of time, the stormwater outflow is delayed over a number

Project Information

Client	Sheffield Hallam University
Contractor	BAM Construction
Products	ABG bluroof
Quantity	5,000m ²
Benefits	<ul style="list-style-type: none">• Restriction of stormwater outflow to an average of 2.9 litres second across the development• Attractive amenity space that enhances the biodiversity of the campus• Combined green & bluroof systems to minimise surface water run-off



ABG bluroof system



of hours. In total, ABG Installs completed the installation of 5,000m² of the ABG bluroof attenuation system for the three new campus buildings (Block A, Block BC and Block D), together with a varied range of both hard and soft landscape finishes. This includes 1,250m² of paving and surrounding ballasted areas and over 700m² of planting, made up of a combination of wildflower and sedum matting, together with a range of ornamental shrubs. Johnsons Nurseries supplied over 4,500 plants in total to enhance the biodiversity and aesthetic aspects of the development, including planting for the bespoke rooftop planter areas.

The ABG Installs Service

A five man team from ABG Installs worked at the campus development over a two year period and were twice awarded the Health & Safety subcontractor of the month award for achieving a 100% score in site safety KPI assessments.



Sheffield Hallam University, Green Campus Masterplan



Bespoke planters, paving and street furniture



Langsett Building rooftop (Block D) on Howard Street